



## Different technical modifications and updatings on baby 24V

### → Starting from serial number: 12003882 dated 19/11/12 **baby plus**

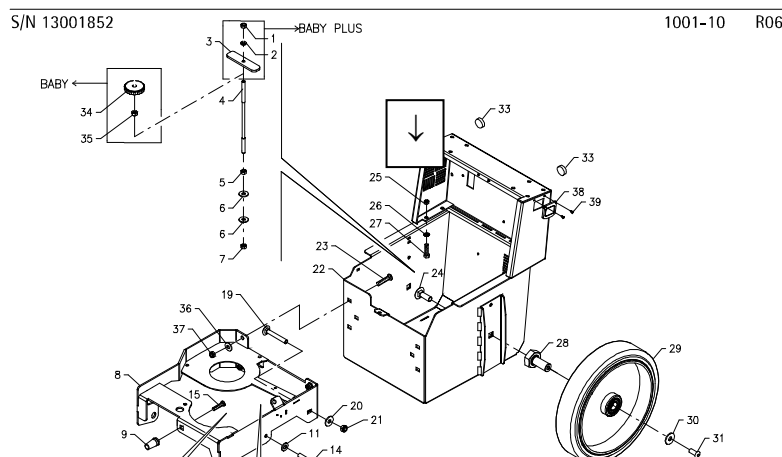
We have updated the spare parts catalogue of the electrical layout **CRE 1012-20** with revision **R01**, replacing the part number of the battery charger with the new one, 64602029 (see also spare parts catalogue, table 1012-30 R03).

Here enclosed revision **R01**.

### → Starting from serial number: 13001503 dated 16/04/13 **baby plus** (table 1001-10 R06)

The new battery charger (64602029) is double insulated and therefore it does not have the ground wire as the previous one. To comply with the Class I it is necessary that the central contact of the plug input is grounded. We add therefore a new connecting cable 49810016 with yellow/green colours. Furthermore, we add the grounded connection screw (pos. 27), nuts (pos. 25) and lock washers (pos. 26) to ensure the contact.

We enclose the technical manual T101204 for further information, valid for the machines having serial number 12003882 up to 13001502.



→ Starting from serial number:

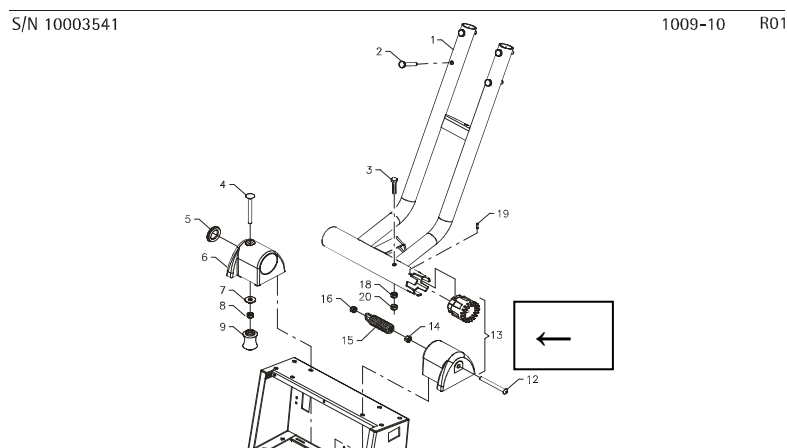
13002506 dated 04/07/13 (**baby**, table 1009-10 R01, pos. 13)

13002512 dated 02/07/13 (**baby plus**, table 1009-10 R01, pos. 13)

13002524 dated 04/07/13 (**baby 43**, table 1309-10 R00, pos. 13)

2

The profile of the coupling teeth between the left support and the toothed terminal (V1009010) has been modified.



Shortly, there will be a new inner rubber holder for the squeegee on **baby**.

It happened sometimes that the front squeegee rubber in some points was not sufficiently blocked and due to the friction with the floor it tended to slip off partially. To avoid this inconvenience, we have modified the inner rubber holder adding more gripping teeth. The new rubber holder is interchangeable with the previous one.

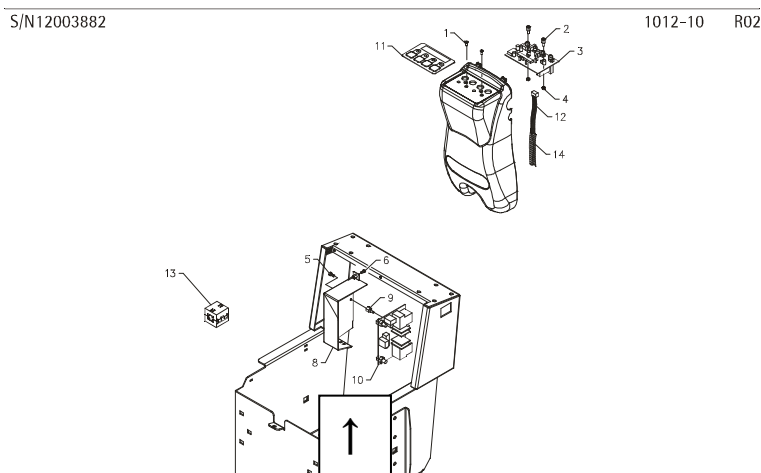


→ Starting from serial number: 13001463 dated 16/04/13 (**baby**)  
13001381 dated 09/04/13 (**baby plus**)

table 1012-10 R02 (pos. 10)

From the analysis of the replaced check cards and the damages occurred, we have verified that often the problem was the 30A relay of the brushes motor. To improve the reliability we have modified the check card inserting a 40A relay with revision index 3. The updated check card relay (49705030) is interchangeable with the previous one.

3



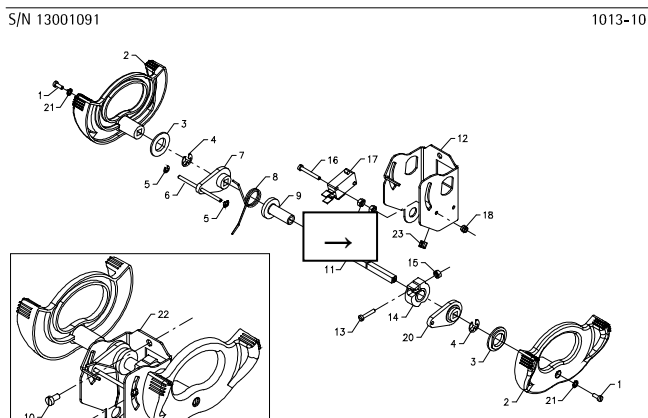
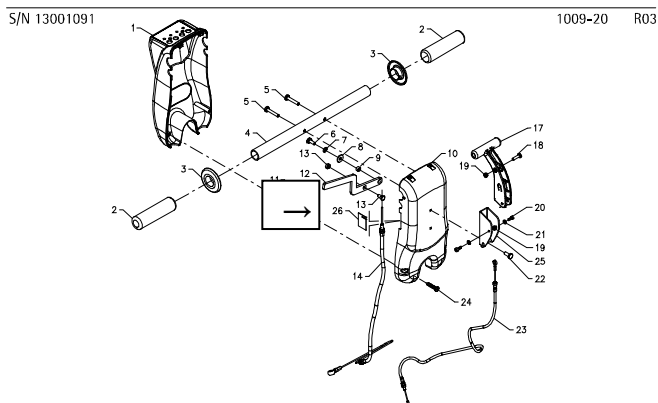
→ Starting from serial number: 13001091 dated 15/03/13 (**baby, baby plus**)

tables: 1009-20 R03 (pos. 26) / 1013-10 R01 (pos. 23)

With regard to the safety rules we intervened by adding positions 26 and 23. The new protection (pos. 26) inserted near the slot of the control lever ensures the protection degree IP23.

The clip (pos. 23) is fixed onto the drive control support to prevent the cables of the general switch (presence) coming into contact with the moving parts.

We have added a ground label (No. 65001020) inside the battery compartment near the connection screw of the ground conductor.



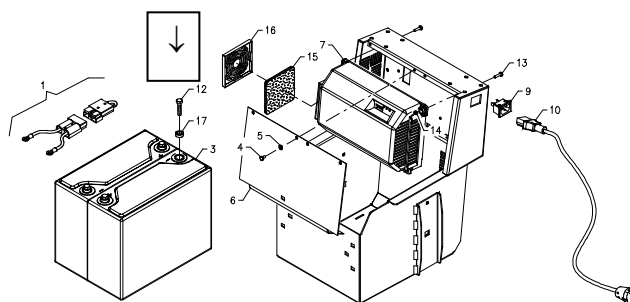
For only **baby plus** (table 1012-30 R04) – pos. 12 and 17

We have introduced a new spacer (pos. 17) between each pole and cable eyelet to obtain a safe air distance towards the plastic parts of the battery covering.

S/N 13001091

1012-30 R04

4



→ Starting from serial number: 13002675 dated 15/07/13 (**baby plus**)

We have added a diode on the red control wire between the recharger and the check card controls.

Because of some problems related to the block of the check card controls when connecting the recharger to the mains socket, we have added a diode on the red control wire. The part number of the recharger remains unchanged.

On request the updated tables.

At your disposal for additional explanations, we remain

with best regards

**ADIATEK SRL**

Technical dept.

*Amore*