



Technical modifications and updating of the spare parts catalogue baby 43

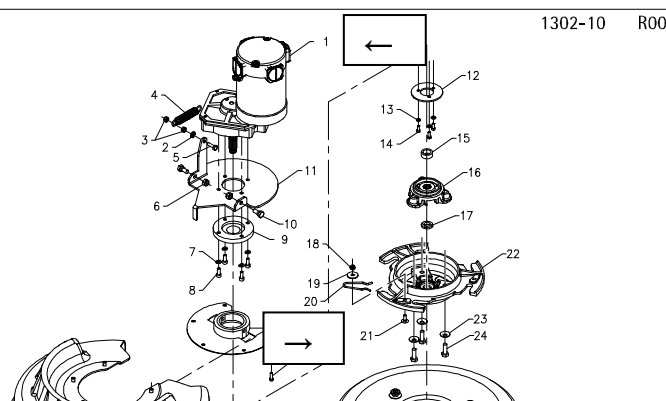
We inform you that on request, the updated tables of the spare parts catalogue are available. With the enclosed **index** you may easily verify which tables are missing in your files so to ask only for those ones.



Here below you will find the most important modifications carried out. We ask you to carefully read all the information.

→ Starting from serial number: 14000246 dated 05/02/14, table 1302-10 R00, pos. 1
We have modified the number of revolutions of the geared motor reducing them to 155 rpm.
This modification has been made both to remove the splashes that could come out from the bristles and to increase the cleaning power with an equal value of amperometric consumption.

The screw M6x16 with part number 60100603 (pos. 21) actually used is too long. We have modified the brush holder plate seat to fit a screw M6x14 with hexagonal head having part number 60110606. This intervention permits also to take off the flat washer with part number 60308003 that is situated between the screw head and the brush holder plate. The brush holder plate (part number 20302250) has been modified and it is interchangeable with the previous version.



→ Starting from serial number: 14000115 dated 15/01/14 - table 1304-10 R00

We replace the screws, pos. 22 and 24 with longer ones, because they did not stick out sufficiently from the nut.

Take off:

60170305 screw M2,5x6 UNI 7688 INOX

Add:

60170306 screw M2,5x8 UNI 7688 INOX

If during maintenance the screws are replaced, we recommend to use some blocking liquid at the reassemblage.

We have added position 28 of the rear rubber blade assembly having number V8313010.

The rear squeegee rubber of 33shore is available to improve drying on 10x10 tiles with large joints. The part number is: 48413050.

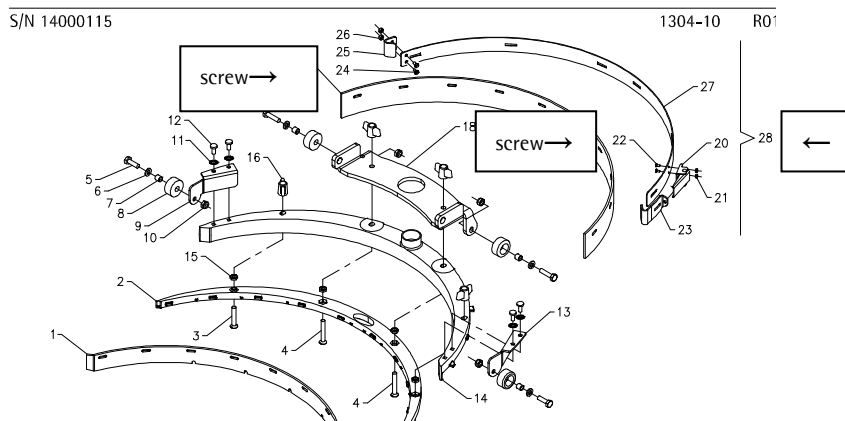
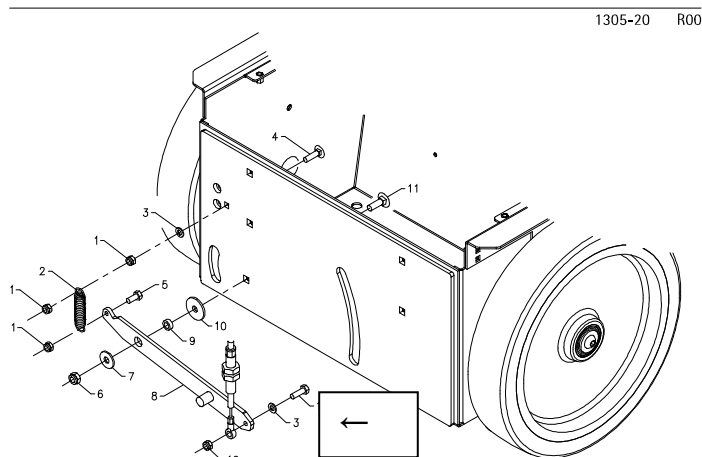


Table 1305-20, R00, pos. 3

We have added a washer with part number 60305002 between the screw pos. 13 and the lifting lever, pos. 8.



Tables: 1309-20 R00 (pos. 27) / 1313-10 R00 (pos. 23)

With regard to the safety rules we intervened by adding positions 27 and 23. The new protection (pos. 27) inserted near the slot of the control lever ensures the protection degree IP23.

The clip (pos. 23) is fixed onto the drive control support to prevent the cables of the general switch (presence) coming into contact with the moving parts.

3

→ Starting from serial number: 14000252 dated 05/02/14 - table 1309-20 R00, pos. 14

To simplify the assembly of the handle bar cable (21309020) it has been lengthened of 25mm. Once it has been assembled, it is necessary to refold it to avoid that it interferes with the drive control.

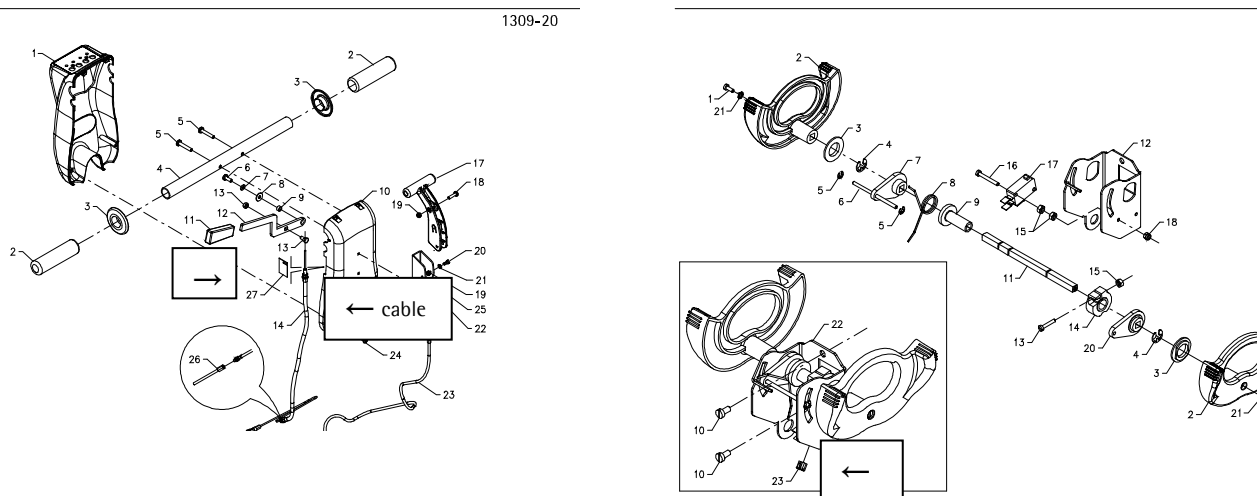
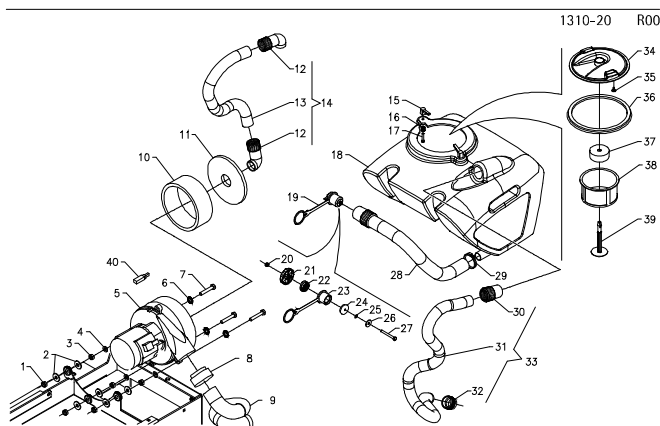


Table 1310-20 R00

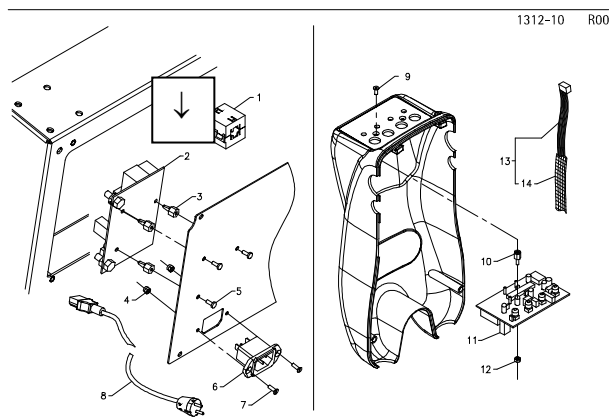
We have added different part numbers starting from position 30.



→ Starting from serial number: 13004575 dated 07/12/13 – table 1312-10 R00, pos. 2
The check card relay 49705050 with brush motor relay of 40A has the condenser of 45μF on the 40A-relay. Because of some breakdowns we have replaced the 45μF condenser with a 150μF one. The check cards are interchangeable with the previous ones.



→ Starting from serial number: 14000253 dated 05/02/14 – table 1312-10 R00, pos. 2
The check card relay is turned upside down to avoid the possibility of short circuits. The position of the check card on the rear panel is modified, it is rotated of 180° to avoid while taking off the panel that the battery cable connections are going to touch accidentally the frame plate. The intervention may be applied also to the existing machines carrying out the holes for the new fixing position of the check card relay. The part number of the panel (21301020, table 1312-20 R00, pos. 2) remains unchanged and is interchangeable with the previous one.



We add the technical manual **T131001** that shows the correct squeegee hose assembly.

At your disposal for any additional information, we remain

with best regards

ADIATEK SRL

Technical dept.

Amore