



Plate brush holder

→ Starting from serial number:

13002065 dated 04/06/13 for baby models
table: 1102-10 R02 (baby e), 1002-10 R03 (baby 24V)

13001223 dated 25/03/13 for models ruby 43 – 48
table: 1202-11 R01

13002154 dated 27/06/13 for models ruby 50
table: 0102-31 R02 (ruby 50), 0402-21 R02 (ruby 50t), 0502-11 R04 (ruby 50e)

13002399 dated 26/06/13 for jade models
table: 0202-11 R02 (jade 50), 0202-31 R04 (jade 66)

13003353 del 08/10/13 for amber models
table: 0902-11 R04 (amber 66 24V), 0302-30 R02 and 0302-40 R02 (amber 66-83)

13002420 dated 27/06/13 for coral models
table: 0802-11 R04 (coral 65), 0802-21 R01 and 0802-22 R01 (coral 65 II)

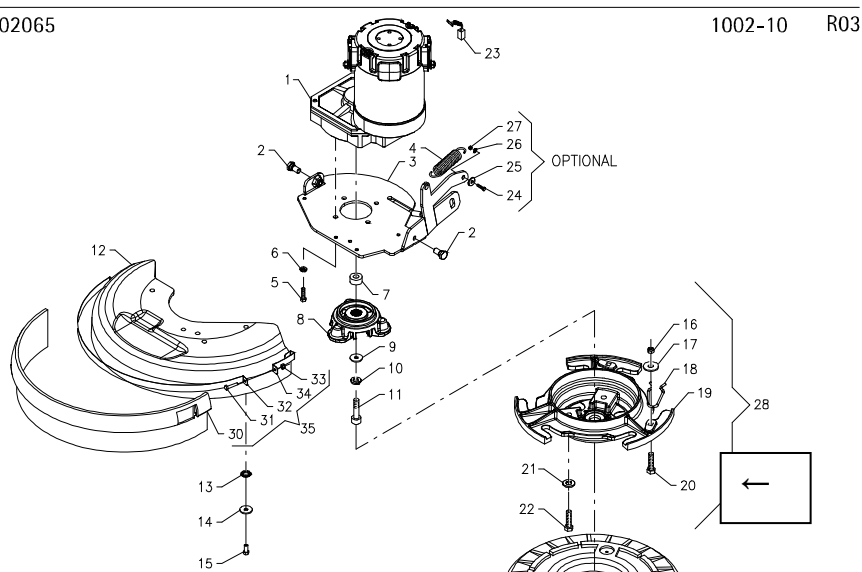
13002419 dated 27/06/13 for sapphire models
table: 0602-30 R02 and 0602-40 R02 (sapphire 65-85)

The screw M6x16 with part number 60100603 actually used is too long. We have modified the brush holder plate seat to fit a screw M6x14 with hexagonal head having part number 60110606. This intervention permits also to take off the flat washer with part number 60308003 that is situated between the screw head and the brush holder plate. The brush holder plate (part number 20302250) has been modified and it is interchangeable with the previous version.

2

S/N 13002065

1002-10 R03



as an example
← you may find the
table of baby 24V.

On request the updated tables.

At your disposal for any additional information, we remain

with best regards

ADIATEK SRL

Technical dept.

Amore