



1

## Different technical modifications and updatings on baby 24V

→ Starting from serial number: 13003943 dated 23/10/13  
table 1009-10 R02, pos. 1 – table 1009-20 R04, pos. 27

The handle bar tube has been replaced and an extension sheath has been inserted.

The guide system of the handle bar cable has been modified, already existing on baby 43. In the lower part of the handle bar tube the welded metallic curved end part has been taken off and an extension sheath for the cable has been assembled. The handle bar tube gets a new part number 21009100 and replaces part number 21009010.

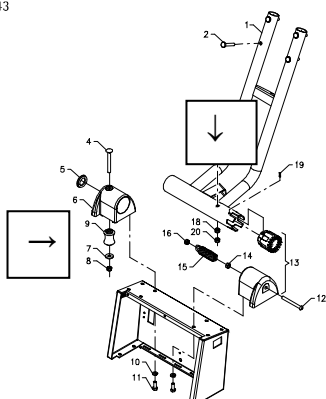
Furthermore the extension sheath with part number 21009090 has been added.

This modification is applicable also to machines already produced replacing the handle bar tube and adding the extension.

We have furthermore corrected in the drawing the positions 7, 8 and 9.

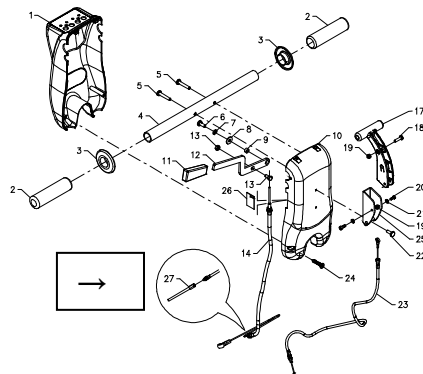
S/N 13003943

1009-10 R02



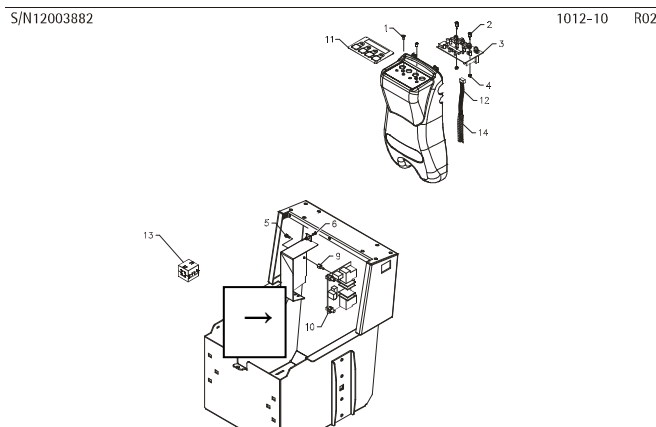
S/N 13003943

1009-20 R04



→ Starting from serial number: 13004580 dated 07/12/13 – table 1012-10 R02, pos. 10  
The check card relay 49705030 with brush motor relay of 40A has the condenser of 470nF on the 40A-relay. Because of some breakdowns we have replaced the 470nF condenser with a 1500nF one. The check cards are interchangeable with the previous ones.

2

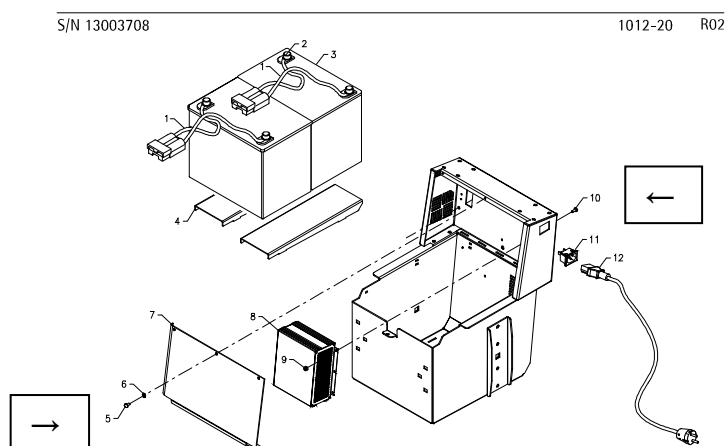


→ Starting from serial number: 13003708 dated 17/10/13 – **baby**  
table 1012-20 R02, pos. 5 and 10

The white zinc-coated screws have been replaced with similar ones but black, already used on baby 43. These refer to the fixing screws of the electric panel and the cover of the check card relay.

Take off:  
pos. 5, 60140402  
pos. 10, 60140402

Add:  
pos. 5, 60140407  
pos. 10, 60140407



→ Starting from serial number: 13003889 dated 21/10/13 – **baby plus**

table 1012-30 R05, pos. 4 and 13

The white zinc-coated screws have been replaced with similar ones but black, already used on baby 43. These refer to the fixing screws of the cover of the check card relay and the fixing of the recharger.

Take off:

pos. 4, 60140402

pos. 13, 60140404

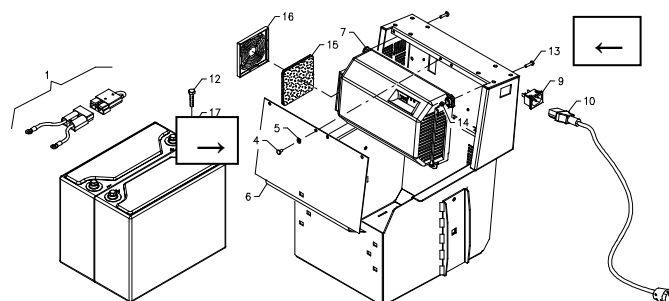
Add:

pos. 4, 60140407

pos. 13, 60140408

S/N 13003889

1012-30 R05



On request the updated tables.

At your disposal for additional explanations, we remain

with best regards

**ADIATEK SRL**

Technical dept.

*Amore*