



Different technical modifications and updatings on baby



Here below you will find the most important modifications carried out on above-mentioned machines. We ask you to carefully read all the information, necessary for your future orders. We add the updated indexes with all its revisions, so that you may easily verify which tables are missing in your files and ask for the relative copies.

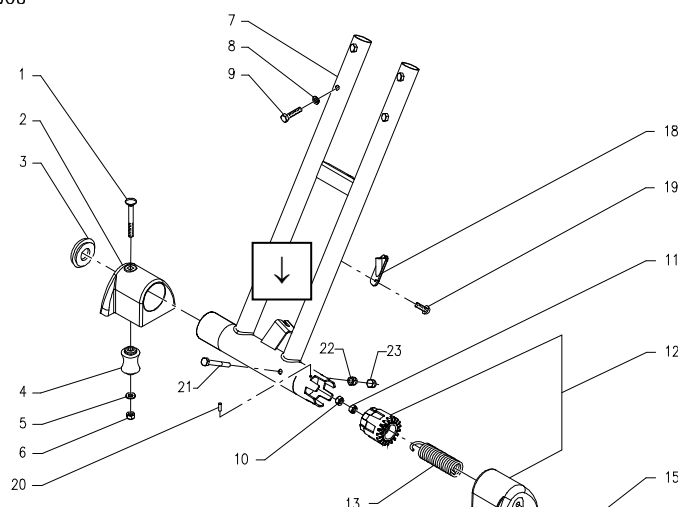
baby e

→ Starting from serial number: 14000284 dated 19/03/14 – table 1109-10 R01

We have modified the adjuster fixing support on the handle bar pipe (pos. 7) to simplify the sheath assembly and its extension. The handle bar pipe is interchangeable with the previous one and maintains the same part number.

S/N 13004308

1109-10 R01



The same modification of the fixing support has also been introduced on the other baby models, with the following serial numbers:

table 1009-10 R02, pos. 1, part no. 21009100 – serial no. 14001099 dated 04/03/14 **for baby**

table 1009-10 R02, pos. 1, part no. 21009100 – serial no. 14001066 dated 04/03/14 **for baby plus**

table 1309-10 R00, pos. 1, part no. 21309010 – serial no. 14001021 dated 03/03/14 **for baby 43**

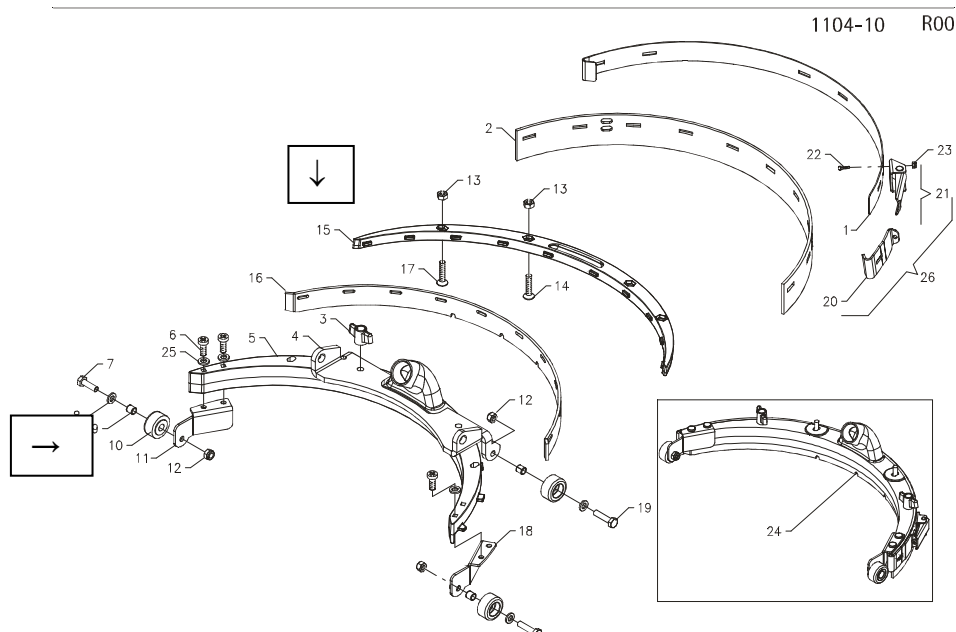
2

baby e – baby 24V

→ Starting from serial number: 14000677 dated 10/02/14 – table 1104-10 R00 and 1004-10 R01
With reference to the Newsletter 57 and 59, we confirm production of the modified inner squeegee rubber holder (pos. 15), part no. 48210020. This item is interchangeable with the previous one.



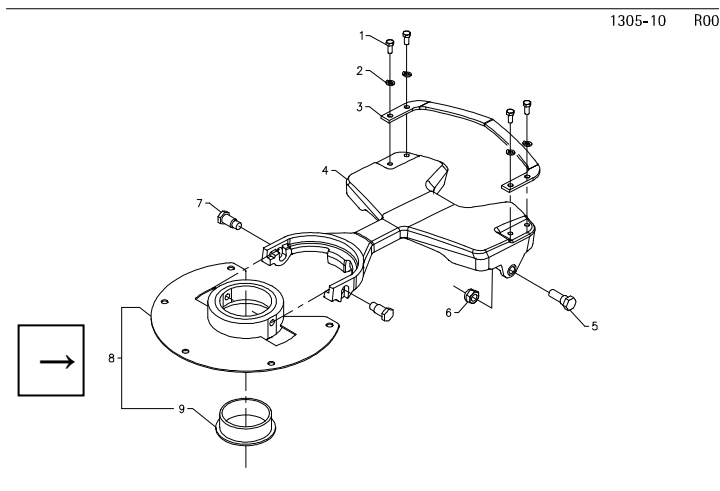
→ Starting from serial number: 14000827 dated 13/02/14 – table 1104-10 R00 and 1004-10 R01
The squeegee wheel (pos. 10) is produced in a soft rubber material instead of the hard one. The part number of the soft wheel is 46550010, while the hard one has got part number 46550020. The two wheels are perfectly interchangeable.



baby 43

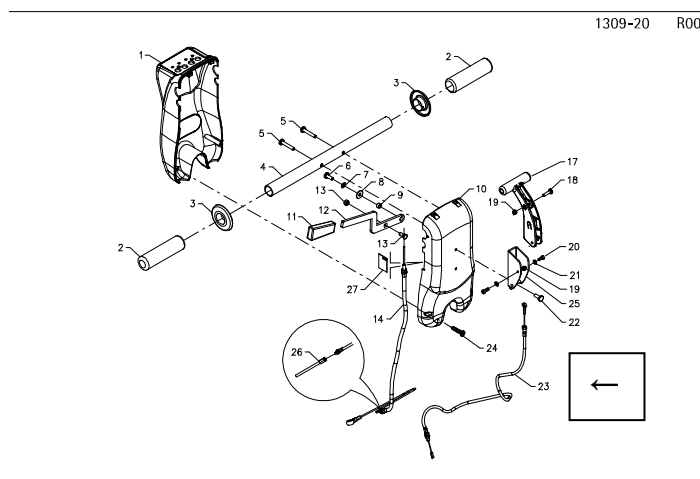
➔ Starting from serial number: 14001219 dated 17/03/14 – table 1305-10 R00, pos. 8

We have improved the rotation characteristics modifying the superficial treatment of the squeegee arm joint, because the galvanization compromised the good functioning of the system.



➔ Starting from serial number: 14001191 dated 12/03/14 – table 1309-20 R00

In some cases the squeegee lifting lever arrives to the limit stop even having adjusted the register. To obviate this inconvenience, the cable (pos. 23) has been lengthened of 5mm. The longer cable is perfectly interchangeable with the previous one.



With our kindest regards

ADIATEK SRL

Technical dept.

Amore