



Technical modifications on baby, baby e, baby 43



Here below you will find the most important modifications carried out on above-mentioned machines. We ask you to carefully read all the information, necessary for your future orders.

baby e

→ Starting from serial number: 14001287 dated 10/03/14 – table 1104-10 R00

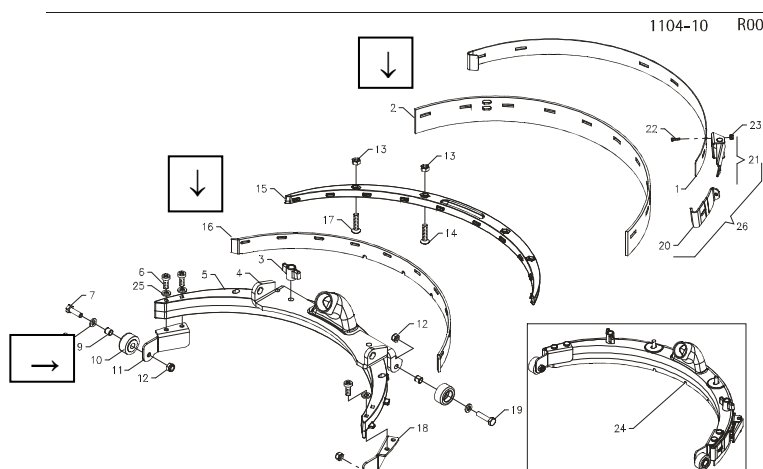
In addition to the Newsletter 83 for the soft squeegee wheels, we have inserted a hard ring moulded inside the wheel (pos. 10, part No. 46550010).

→ Starting from serial number: 14002804 dated 18/07/14

We have modified the wheel material mix (pos. 10, part No. 46550010) that presents characteristics of greater hardness and of higher wear resistance. The new wheels will be of grey colour instead of the black ones. The part number remains unchanged as they are interchangeable.

→ Starting from serial number: 14003747 dated 08/10/14 – pos. 2 and 16

To improve the drying results on all floor types, some characteristics of the squeegee rubbers have been modified. The front rubber will have the hardness of 33sh instead of 40sh. On the contrary, the rear rubber will maintain the hardness of 33sh, but the height will be modified, from 39 to 40,5mm. All part numbers remain unchanged and are interchangeable with the previous ones.



baby b

→ Starting from serial number: 14001083 dated 06/03/14 for baby – serial number 14001076 dated 06/03/14 for baby plus – ref. table 1004-10 R01

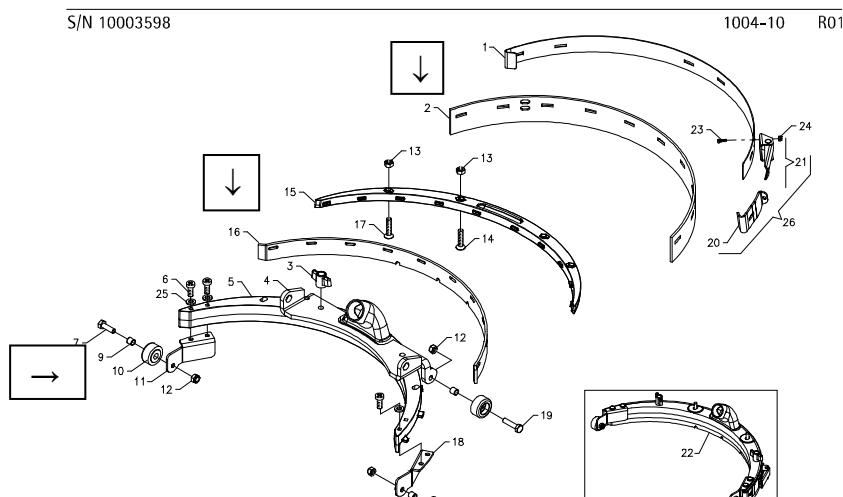
In addition to the Newsletter 83 for the soft squeegee wheels, we have inserted a hard ring moulded inside the wheel (pos. 10, part No. 46550010).

→ Starting from serial number: 14002804 dated 18/07/14

We have modified the wheel material mix (pos. 10, part No. 46550010) that presents characteristics of greater hardness and of higher wear resistance. The new wheels will be of grey colour instead of the black ones. The part number remains unchanged as they are interchangeable.

→ Starting from serial number: 14003747 dated 08/10/14 – pos. 2 and 16

To improve the drying results on all floor types, some characteristics of the squeegee rubbers have been modified. The front rubber will have the hardness of 33sh instead of 40sh. On the contrary, the rear rubber will maintain the hardness of 33sh, but the height will be modified, from 39 to 40,5mm. All part numbers remain unchanged and are interchangeable with the previous ones.



→ Starting from serial number: 14003060 dated 23/07/14 for baby – serial number 14002812 dated 23/07/14 for baby plus – ref. table 1012-20 R03 and 1012-30 R06

We implement the protection fixing to the battery compartment with a clamp to avoid the possibility to reach tension parts with the fingers. The present solution is reported in the UL-test report S12-0267. We modify therefore the protection (part No. 21001050) of the electrical layout adding a hole to permit the clamp fixing (part No. 61910005). The new protections are interchangeable.

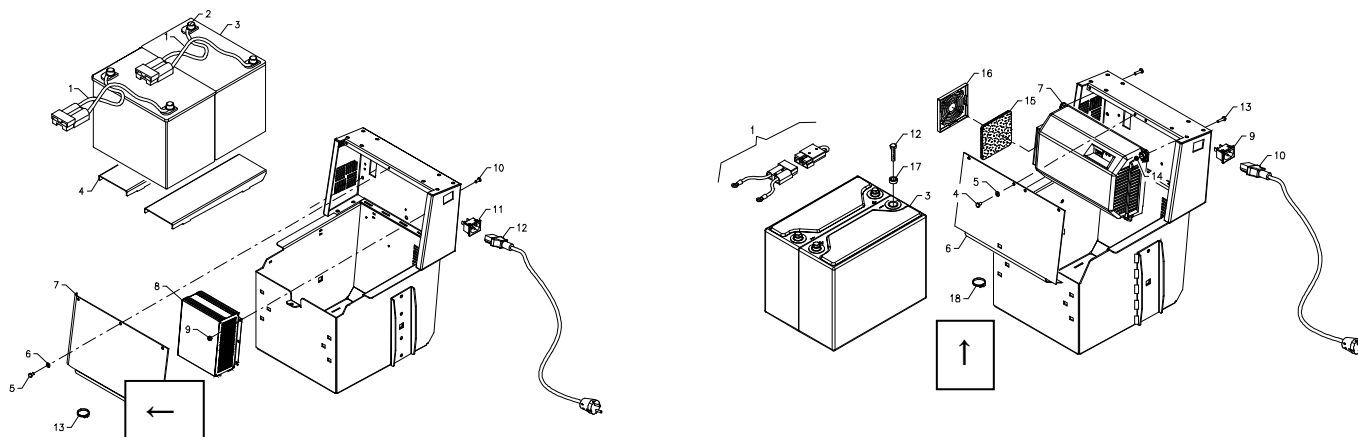
3

S/N 14003060

1012-20 R03

S/N 14002812

1012-30



→ Starting from serial number: 14002938 dated 09/10/14 – table 1012-10 R03, pos. 3 for **baby plus**

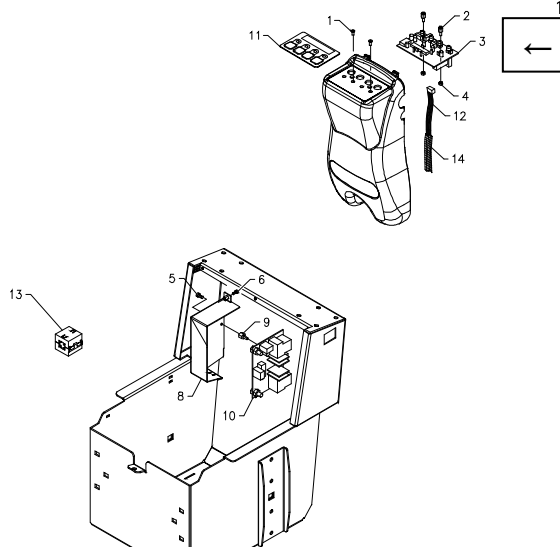
The battery charger with part No. 64602029 adopts a new charging curve. Furthermore, the lower tension limit is brought to 23V (1,92V/cell); when this limit is reached, the battery charger stops the machine and it is possible to work only with the cable.

With this battery charger it is necessary to update also the visualization of the check card controls, therefore the new card will have part No. 49704120.

If the battery charger needs to be replaced, it is recommended to replace also the check card controls, while the new check card can replace the previous one as spare part.

S/N 14002938

1012-10 R03



baby 43

→ Starting from serial number: 14002251 dated 03/06/14
ref. table 1302-10 R01, pos. 1 and table 1312-10 R01, pos. 2

The present motor has been replaced with a stronger one of 450W at 150 rpm.

To conform the electrical layout to the bigger motor power, also the check card replay has been replaced. Instead of part No. 49705050 it becomes 49705040.

This new motor has different components and the hose cannot be fixed anymore to a clamp running through the ventilation cover gaps. We add therefore a metallic clamp assembled as indicated in the enclosed instructions T131001 that secures a saddle support to which the hose will be fastened.

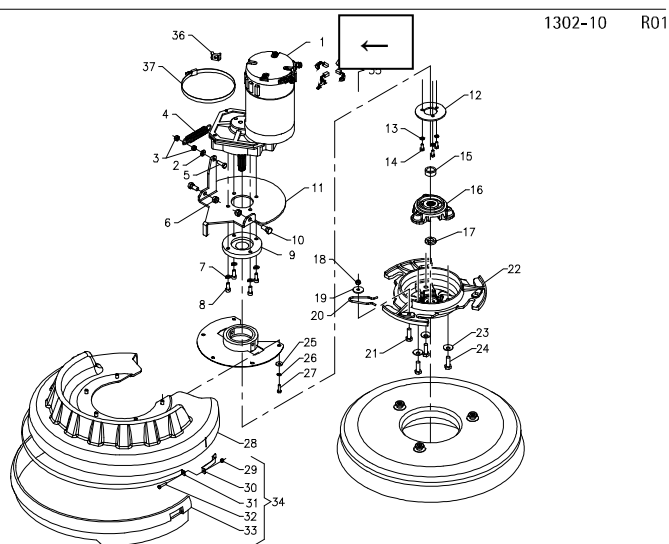
Serial number for the introduction of the metallic clamp dated 17/07/2014:

for K1300001 the serial number is: 14002743. For K1300002 the serial number is: 14002711.

With the introduction of the new motor the nominal power of the machine increases and therefore it is necessary to update also the serial number plate indicating the total value of 760W.

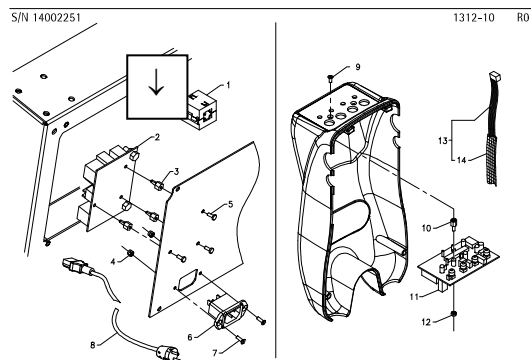
When spare parts of the geared motor with part No. 46200380 are requested, you will be going to receive the assembly V1302002 (new geared motor and stronger relay card).

S/N 14002251



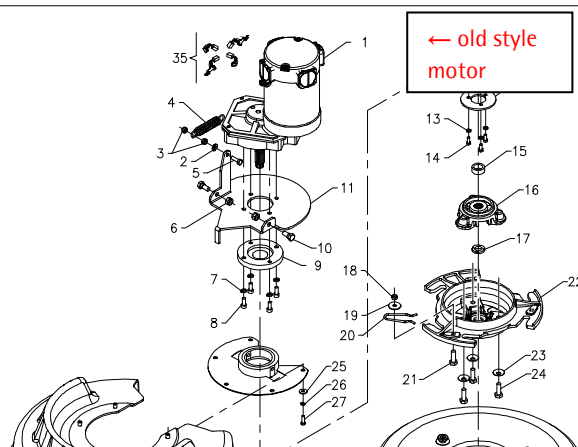
1302-10 R01

S/N 14002251



1312-10 R01

1302-10 R00



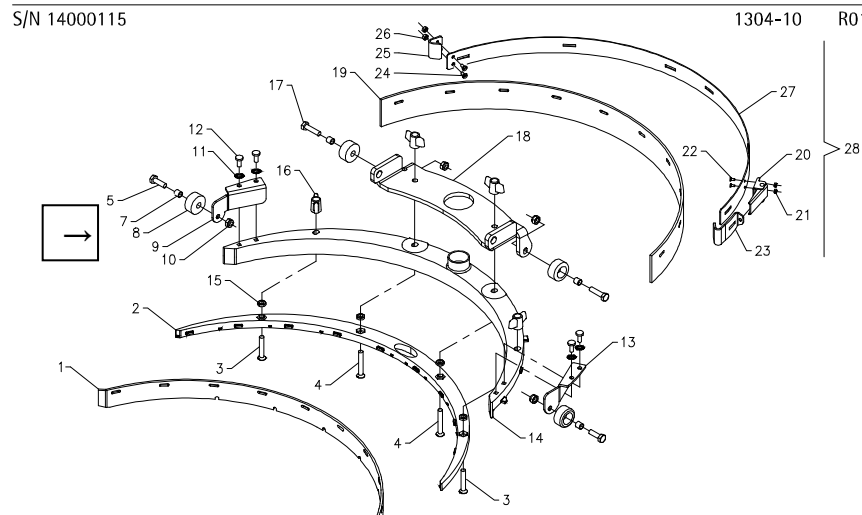
→ Starting from serial number: 14001287 dated 10/03/14 – ref. table 1304-10 R01

We have inserted a hard ring moulded inside the wheel (pos. 8, part No. 46550010).

→ Starting from serial number: 14002804 dated 18/07/14

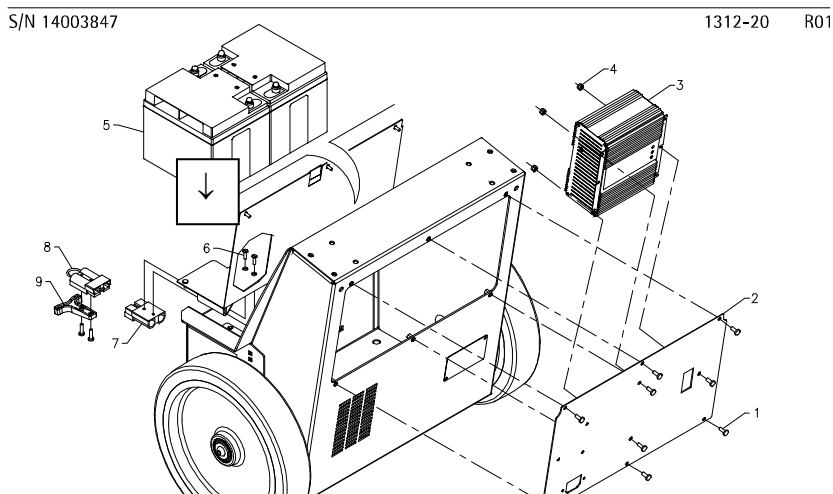
We have modified the wheel material mix (pos. 8, part No. 46550010) that presents characteristics of greater hardness and of higher wear resistance. The new wheels will be of grey colour instead of the black ones. The part number remains unchanged as they are interchangeable.

5



→ Starting from serial number: 14003847 dated 23/10/14 – table 1312-20 R01

We have recently changed the supplier of the 50A connector. On this machine it is fixed on the panel with self-threaded screws. With the previous connector a self-threaded screw of Ø 3,9 (part No. 60190312) was enough. With the new connector the holes are a little bigger and the screw does not manage anymore to fix properly the connector. Therefore the screw of Ø 3,9x13 has been replaced with one of Ø 4,2x13 having part No. 60190415 in INOX.



Best regards
ADIATEK SRL
Technical dept.

Amore