



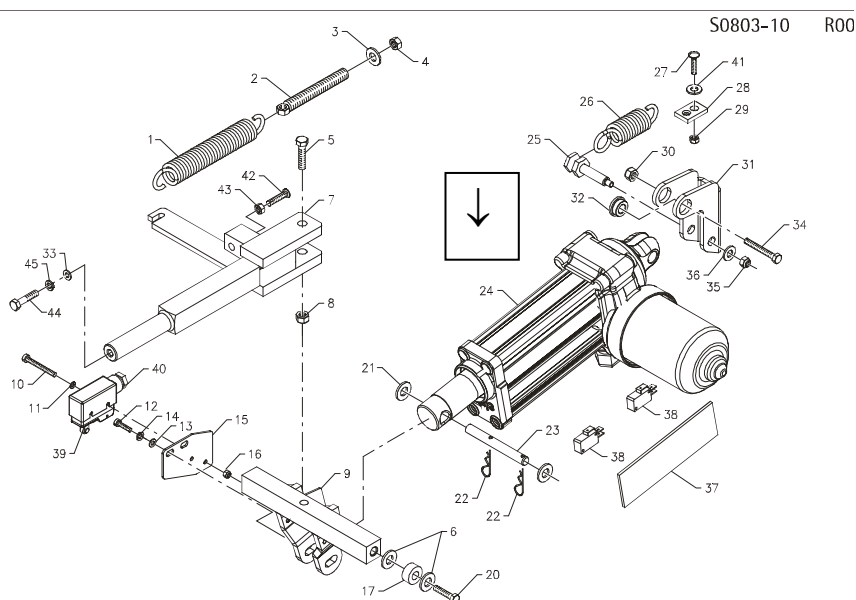
## Different technical modifications and updatings on coral 70s



Here below you will find the most important modifications carried out on above-mentioned machine. We ask you to carefully read all the information, necessary for your future orders. We add furthermore the summary and the updated index with all its revisions, so that you may check your files and ask for the missing tables.

Ref. table S0803-10 R00

We have modified the drawing correcting mainly the design of the actuator.



→ Starting from serial number: 13003474 dated 11/10/13 – table S0801-10 R03

Actually the saddle supports (pos. 59) are assembled on the frame with a screw and nut. When the machine is assembled, it is difficult to reach the nut and a possible support replacement becomes onerous. To avoid this problem, the frame has been threaded directly. For this intervention the screw M5x14 has been replaced with a M5x8 one and the nut has been removed.

To avoid that with the vibrations the screws may get loose, put a drop of locking liquid, Loctite 641, onto the thread.

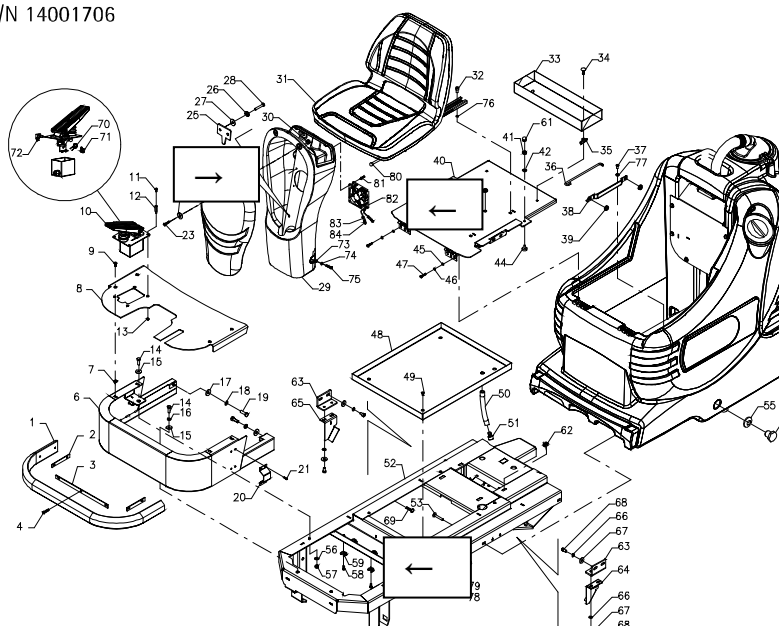
→ Starting from serial number: 14001706 dated 29/04/14 – table S0801-10 R04 and S0812-10 R01

To improve the performances of the chopper card, we have added a cooling fan. This device requires the realization of ventilation openings on the front column, on the front frame and on the electric panel. The modification can be applied also on already produced machines. The complete assembly of the fan has part number: V0812010

The assembling instructions with No. T081208 are available.

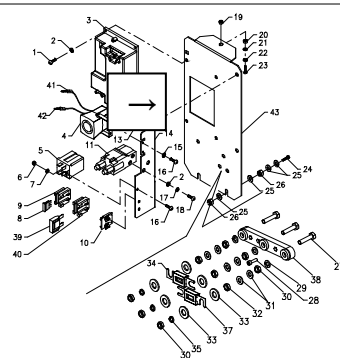
S/N 14001706

S0801-10 R04



S/N 09000109

S0812-10 R01



Ref. table S0804-20 R01

We have added in the description positions 28 and 29.

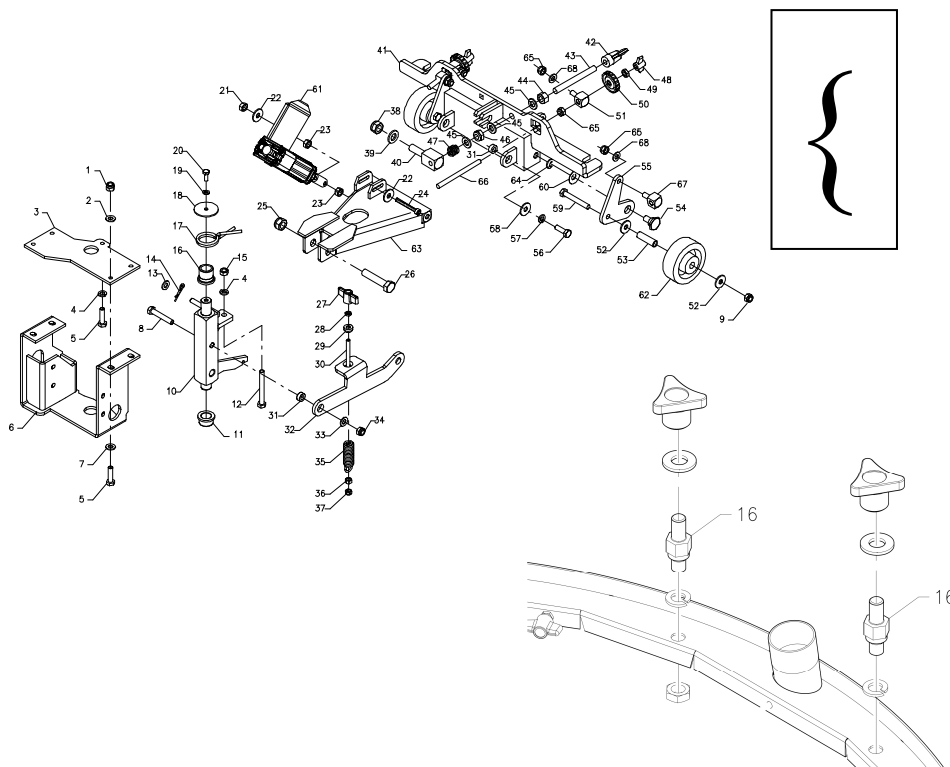
→ Starting from serial number: 14001438 dated 08/04/14 – table S0805-10 R02

The complete squeegee coupling is replaced with a new one, because the adjustment with this new system is much more solid also in presence of heavy impacts. Consequently the adjustment system has been modified and therefore a new coupling and new wheel supports are needed. The adjustment will not be anymore by simple leaning onto the support but the new system will be equipped with a threaded tie rod and adjuster. The new system may be applied integrally also on already produced machines being cautious to replace also the two stud bolts of the squeegee (ref. table S0804-10 R00, pos. 16, part No. 20604030).

3

S/N 14001438

S0805-10 R02



Ref. table S0806-10 R01, pos. 71

The capacity of the collection box with part No. 20606420, is of 8 litres. We have furthermore carried out drillings with wider surfaces, so to ensure the water draining that is collected in the box.

Ref. table S0807-10 R01

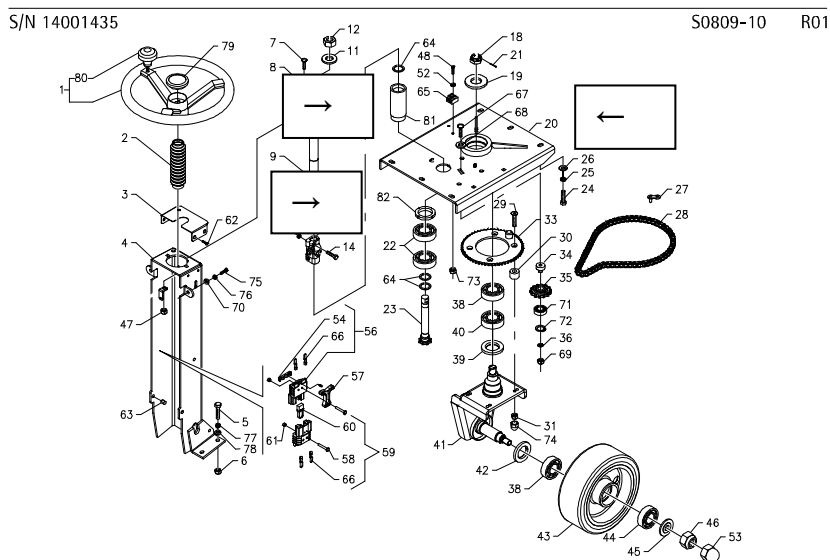
We have modified the drawing and the description of the brake blocks. We have furthermore corrected the part numbers of the positions 13 (geared motor) and 31 (geared motor assy).

On request it is possible to assemble a softer wheel (pos. 1) having part No. 46524120. The wheel material is of 65sh, recommended for when the machine becomes slippery.

→ Starting from serial number: 14001435 – table S0809-10 R01

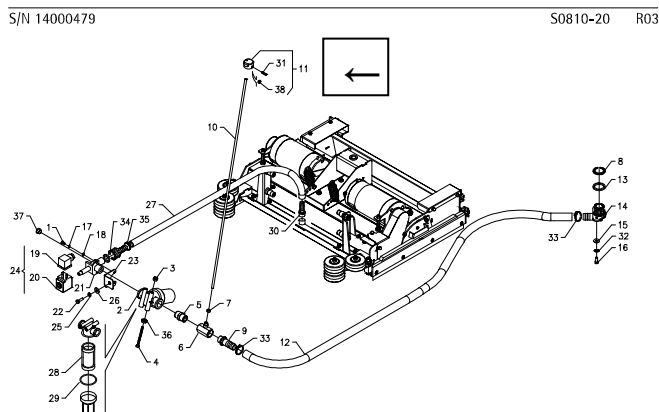
The bearing pipe of the steering wheel pinion becomes disassembled because welding it to the steering wheel support the seat of the lower bearing is often deformed. This application is already assembled on coral 65m. On the steering wheel support (pos. 20) the hole has been modified by increasing the diameter to 50,5mm and realizing an anti-rotation key. On the pipe (pos. 81) an M50 thread has been obtained with a grooved seat for the key. The fixing is obtained by screwing the ring nut M50 (pos. 82). In case of spare parts requests, we can supply in place of part number 20809040 (steering wheel support) the assembly made of:

- pos. 20 20809060 steering wheel support
- pos. 81 20809320 pipe bearings
- pos. 82 60285010 blocking ring nut M50x1,5



→ Starting from serial number: 14000479 dated 28/01/14 – table S0810-20 R03

We have replaced the solution valve knob made with a mould designed in PA6 + glass fiber. The new part is interchangeable with the previous one.



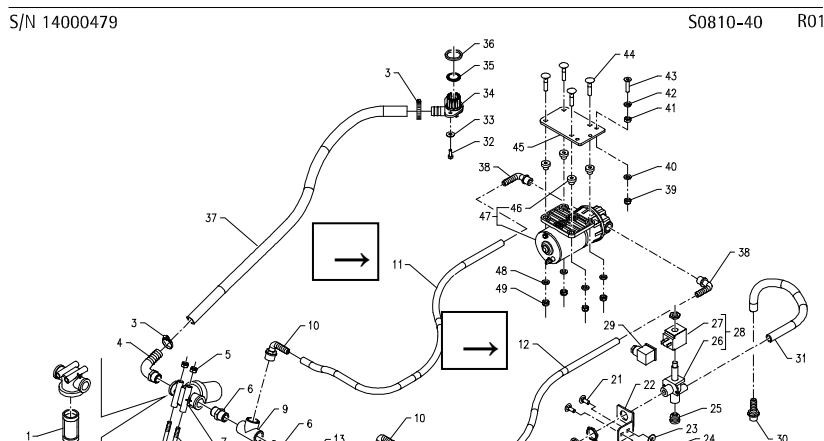
Ref. table S0810-30 R01 of the detergent tank assembly 3SD

We have updated the descriptions of the positions: 17, 19, 20, 25 and 27

Furthermore, we have replaced the clamp of pos. 28 with one having part No. 61930012

→ Starting from serial number: 14000479 dated 28/01/14 – table S0810-40 R01, pos. 11 and 12  
To optimize the water course we have changed the hose circuits of the pump. This is valid only for the machines equipped with the dosing system.

5



→ Starting from serial number: 13003293 dated 02/10/13, table S0812-20 R04, pos. 5

We have replaced the fuse 62801003 of 10A with one of 15A having part number 62801501. This fuse is assembled on the check card of the functions, pos. 5.

We enclose the modified electric diagram, Cre0812-20 R01 (pos. F5).

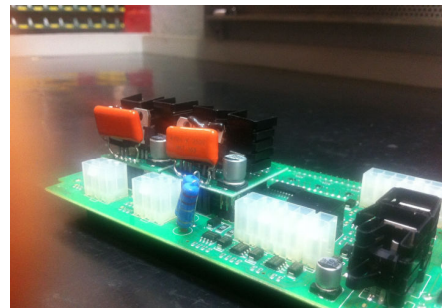
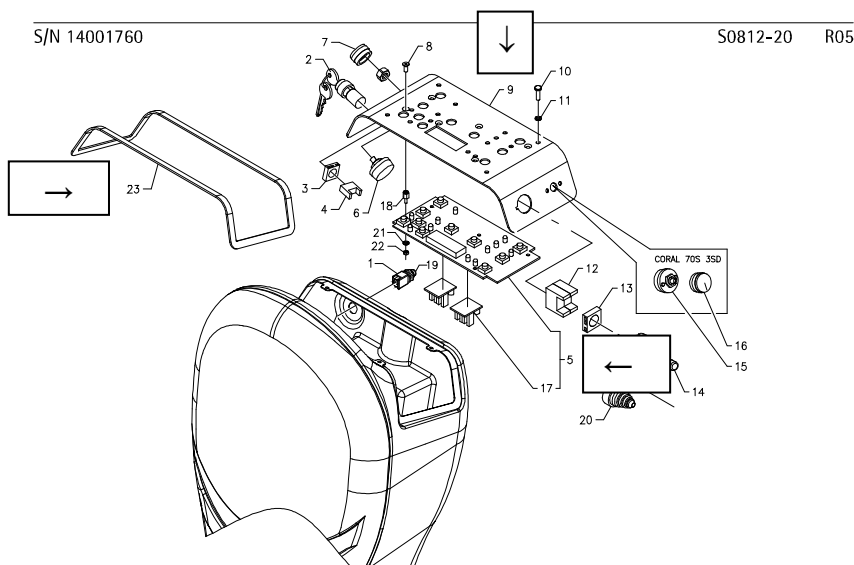
→ Starting from serial number: 14001284 dated 19/03/14, pos. 5

We have updated the software of the check card functions to version 5\_4 making it safer and more reliable.

All the problems of the check card are given from interferences that the electric layout gives to the microprocessor.

We have intervened both in the hardware and in the software:

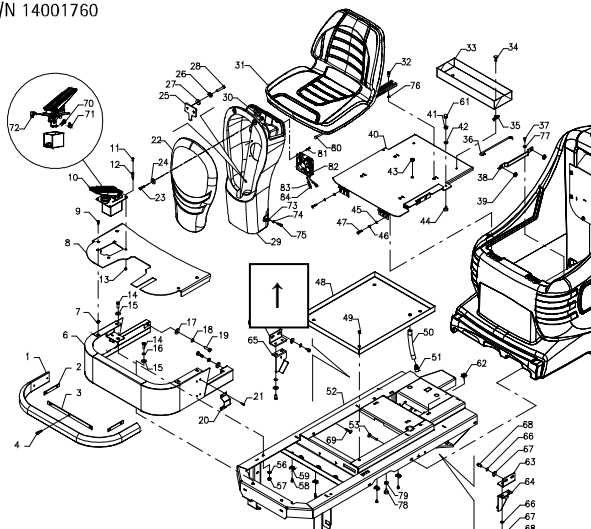
- **hardware:** we have added two filter condensers on the actuator modules that filter eventual interferences coming from the actuator motors.
- **software:** we have modified the starting ramps of the actuator motors. Having a slower start, the possible disturbances may be of lower intensity.



→ Starting from serial number: 14001760 dated 08/05/14, table S0812-20 R05 and table S0801-10 R05

The front covering and the control panel has been replaced to fit the sealing gasket. The housing of the control panel (pos. 9) has been enlarged to permit the assembly of a sealing gasket (pos. 23). The modification requires an intervention on the mould of the front covering 20611010 which cannot be supplied anymore as a spare part for the produced machines. In case of spare parts requests, it is necessary to supply the new front covering with the new control panel and the gasket, informing us about the colour of the covering. The label of the control panel remains unchanged.

S/N 14001760



Finally, we have added table S0812-40 R00 for the on-board charger assembly.

At your disposal for additional explanations, we remain

with best regards

**ADIATEK SRL**

Technical dept.

*Amore*