

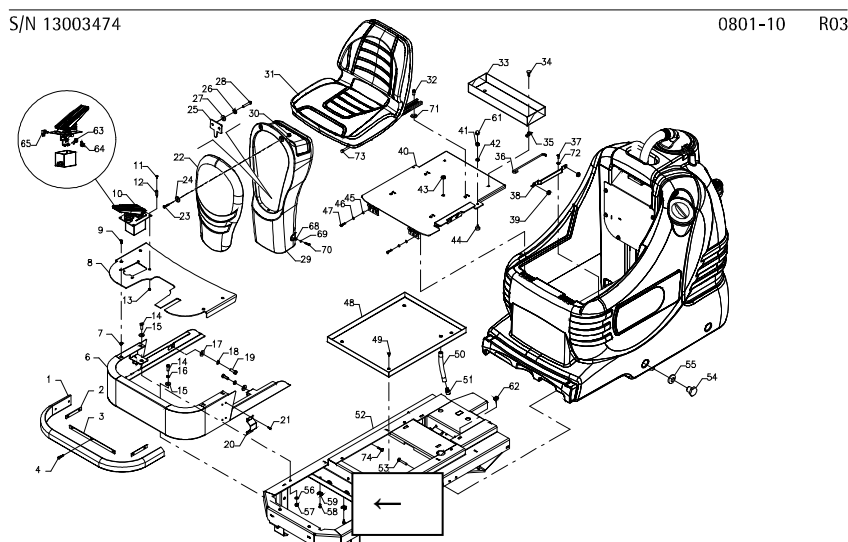


Technical modifications and updatings of the spare parts catalogue coral 65 – 65 II – 85



Here below you will find the most important modifications carried out on above-mentioned machines. We ask you to carefully read all the information, necessary for your future orders. We add furthermore the first page, the summary and the updated index with all its revisions, so that you may easily verify which tables are missing in your files and ask for the missing copies. As you may note, we have added the missing tables of **coral 65 II** and **coral 85**, available on request.

→ Starting from serial number: 13003474 dated 11/10/13 – table 0801-10 R03 – **coral 65**
Actually the saddle supports (pos. 59) are assembled on the frame with a screw and a nut. When the machine is assembled, it is difficult to reach the nut and a possible support replacement becomes onerous. To avoid this problem, the frame has been threaded directly. For this intervention the screw M5x14 has been replaced with a M5x8 one and the nut has been removed.
To avoid that with the vibrations the screws may get loose, put a drop of locking liquid, Loctite 641, onto the thread.



→ Starting from serial number: 14001396 dated 04/04/14 – table 0801-10 R04 – coral 65-coral 65II
In order that the bumper cover was supposed to be the front outer part in the different coral machines, different versions have been realized between the machines having disc brushes or cylindrical ones that differ in the rear part: for the disc brushes machines the two side protections are longer. It has been decided to adapt the cover applying for part number 20811010. For the disc brushes versions the two side covers will be added having part numbers 20811150 and 20811160 fixing them with black zinc-coated screws M5x12 (part No. 60100505).

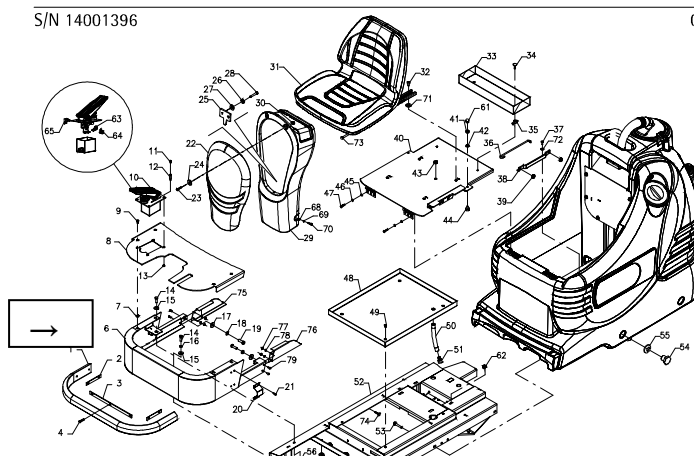
For the spare parts management whenever an old cover with part number 20811070 or with part number 20811140 (for machines with dosing system) is requested, the assemblies are:

V0811020 cover complete for standard machine

V0811030 cover complete for machines equipped with dosing system

S/N 14001396

0801-10 R04

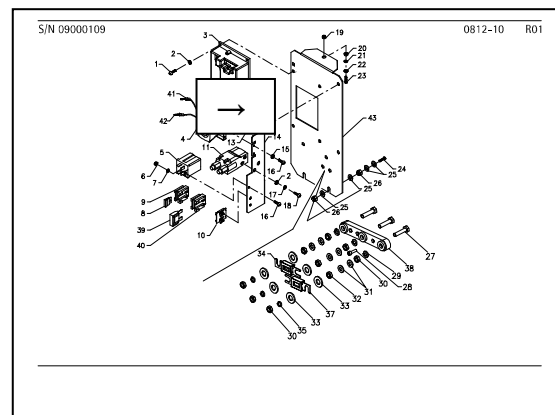
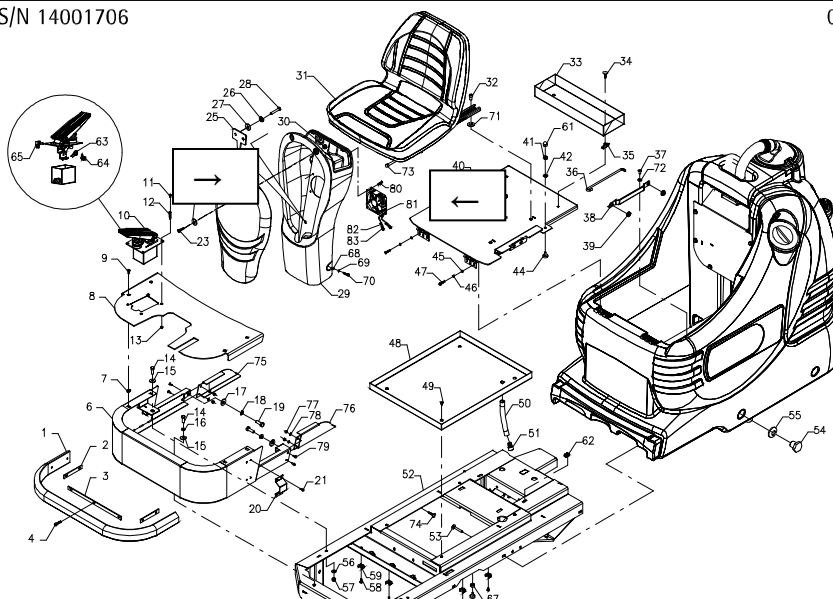


→ Starting from serial number: 14001706 dated 29/04/14 – table 0801-10 R05 and 0812-10 R01 for coral 65 - coral 65II

To improve the performances of the chopper card, we have added a cooling fan. This device requires the realization of ventilation openings on the front column, on the front frame and on the electric panel. The modification can be applied also on already produced machines. The complete assembly of the fan has part number: V0812010. The assembling instructions with No. T081208 are available.

S/N 14001706

0801-10 R05



ADIATEK srl
I-37057 San Giovanni Lupatoto
Via Monte Pastello 14

futuro nella tradizione

Tel. +39 045 877 9086
Fax +39 045 877 9195
www.adiatek.com
servtec@adiatek.com

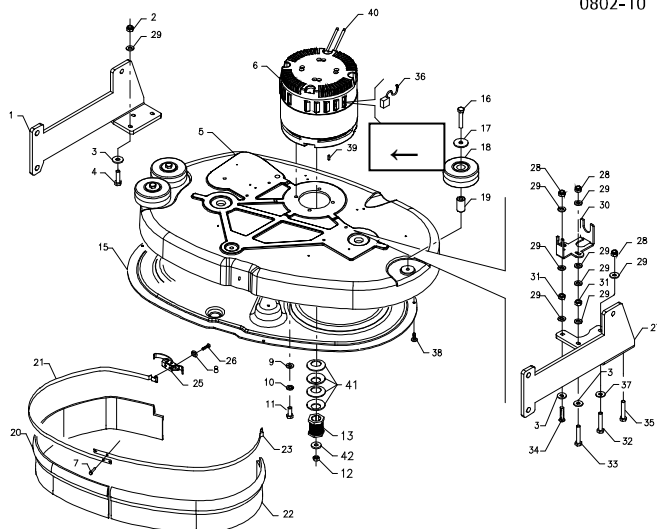
Ref. table 0801-10 R06 – we have added the new model **coral 85** adding some parts. The first machine has serial number 14001317.

→ Starting from serial number: 13003291 dated 30/09/13 – table 0802-10 R03 – **coral 65**
In order to adjust better the belt position, we have lengthened the motor shaft of 4mm. Furthermore the key has been replaced with a longer one (pos. 39).

3

S/N 13003291

0802-10 R03



Ref. table 0802-11 R04, pos. 48

Ref. table 0802-21 R01, pos. 40

Ref. table 0802-22 R01, pos. 20

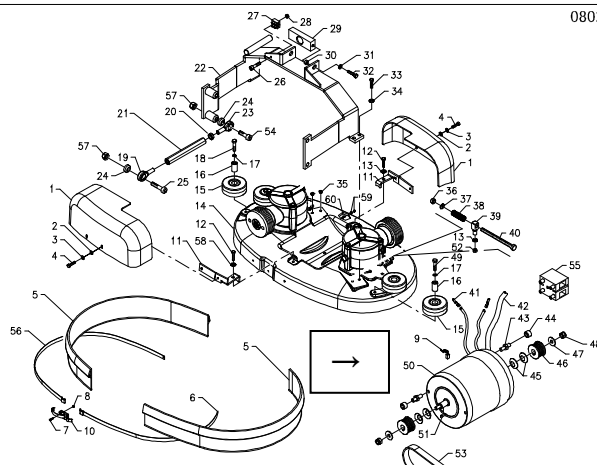
We have corrected the part number of the screw, instead of 60100606 it is: 60110606

The description remains unchanged.

Ref. table 0802-30 R00 – coral 85 – pos. 50

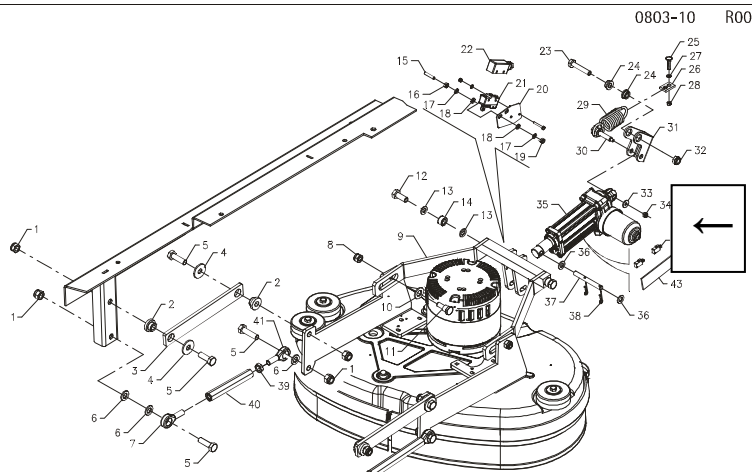
The part number of the brushes motor has been corrected, namely: 46220200 Motor 24V – 900W

0802-30 R00



Ref. table 0803-10 R00

We have modified the drawing correcting mainly the design of the actuator.



Ref. table 0803-20 R01

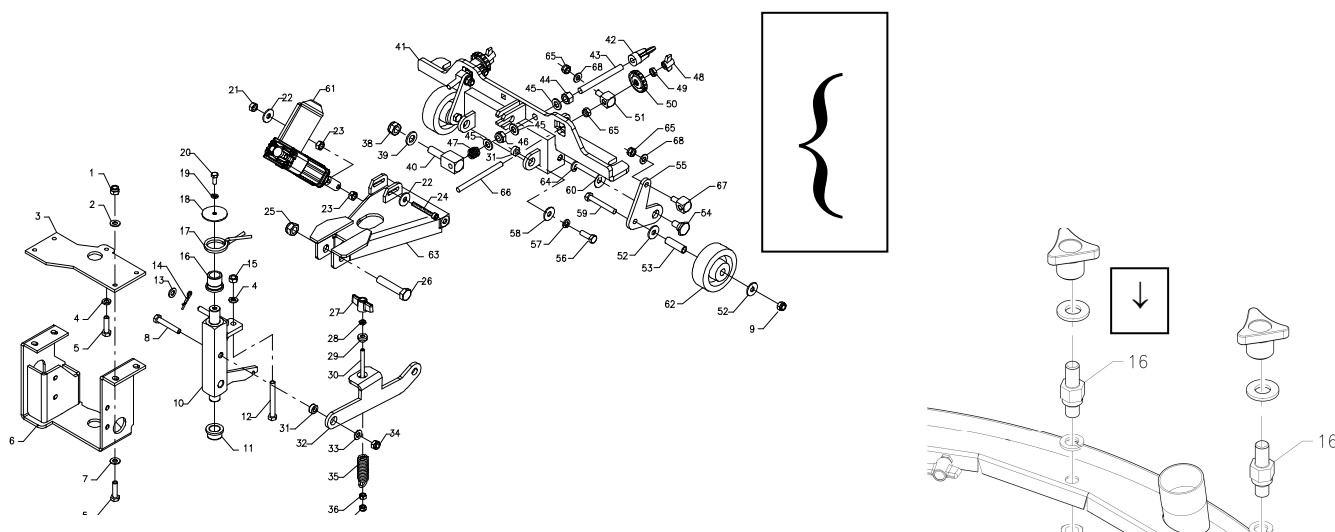
We have updated the table for the models coral 65 II and coral 85.

→ Starting from serial number: 14001438 dated 08/04/14 – table 0805-10 R02

The complete squeegee coupling is replaced with a new one, because the adjustment with this new system is much more solid also in presence of heavy impacts. Consequently the adjustment system has been modified and therefore a new coupling and new wheel supports are needed. The adjustment will not be anymore by simple leaning onto the support but the new system will be equipped with a threaded tie rod and adjuster. The new system may be applied integrally also on already produced machines being cautious to replace also the two stud bolts of the squeegee (ref. table 0804-10 R00, pos. 16, part No. 20604030).

S/N 14001438

0805-10 R02



Ref. table 0807-10 R01

We have modified the drawing and the description of the brake blocks. We have furthermore corrected the part numbers of the positions 13 (geared motor) and 31 (geared motor assy).

On request it is possible to assemble a softer wheel (pos. 1) having part number 46524120. The wheel material is of 65sh, recommended for when the machine becomes slippery.

5

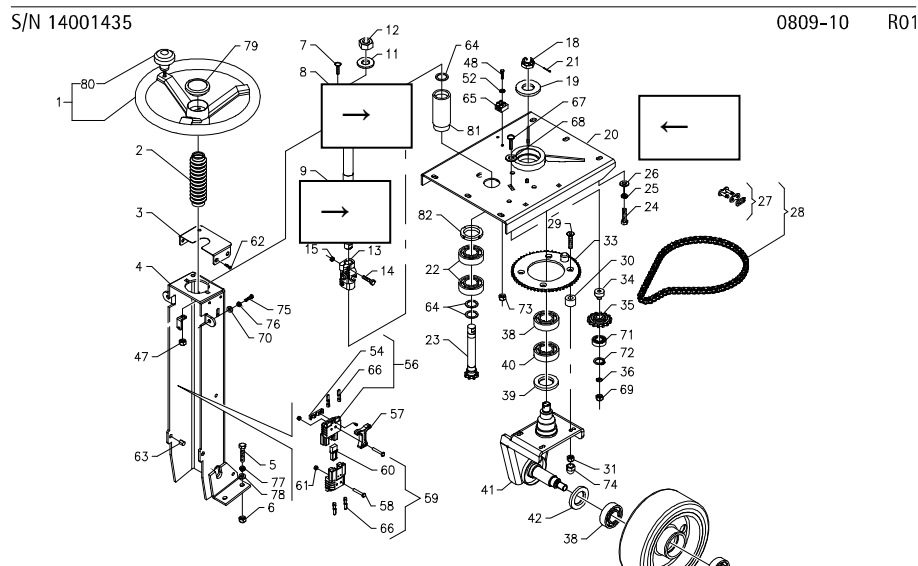
→ Starting from serial number: 14001435 – table 0809-10 R01

The bearing pipe of the steering wheel pinion becomes disassembled because welding it to the steering wheel support the seat of the lower bearing is often deformed. This application is already assembled on coral 65m. On the steering wheel support (pos. 20) the hole has been modified by increasing the diameter to 50,5mm and realizing an anti-rotation key. On the pipe (pos. 81) an M50 thread has been obtained with a grooved seat for the key. The fixing is obtained by screwing the ring nut M50 (pos. 82). In case of spare parts requests, we supply in place of part 20809040 (steering wheel support) the following part numbers:

pos. 20 20809060 steering wheel support with hole

pos. 81 20809320 pipe bearings

pos. 82 60285010 blocking ring nut M50x1,5



Ref. table 0810-30 R01

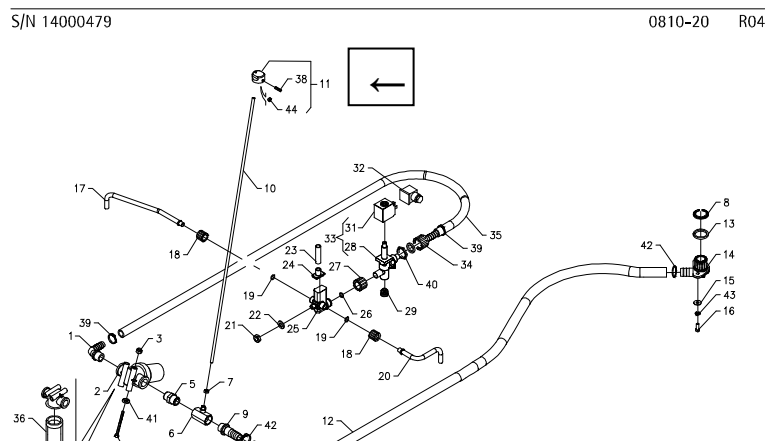
We have updated the descriptions of some hoses and replaced the clamp 61930011 with one having part number 61930012 clamp hose wrench (pos. 28).

Ref. table 0810-40 R00

We have updated the descriptions of some hoses.

→ Starting from serial number: 14000479 dated 28/01/14 – table 0810-20 R04 and 0810-50 R01 for the models coral 65 and coral 65 II

We have replaced the solution valve knob made with a mould designed in PA6 + glass fiber. The new part is interchangeable with the previous one.



→ Starting from serial number: 13003293 dated 02/10/13, table 0812-20 R04, pos. 5

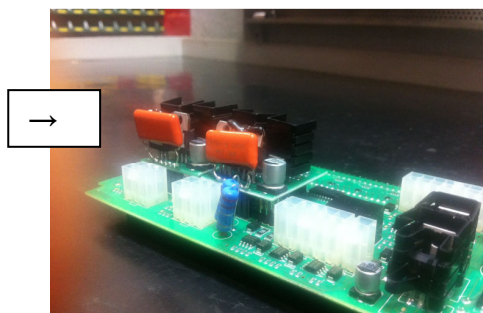
We have replaced the fuse 62801003 of 10A with one of 15A having part number 62801501. This fuse is assembled on the check card of the functions, pos. 5.

We enclose the modified electric diagram, Cre0812-10 R01 (pos. F5).

→ Starting from serial number: 14001092 dated 20/03/14 for coral 65 and serial number 14001284 dated 19/03/14 for coral 65II, pos. 5

We have updated the software of the check card functions to version 5_4 making it safer and more reliable. All the problems of the check card are given from interferences that the electric layout gives to the microprocessor. We have intervened both in the hardware and in the software:

- **hardware:** we have added two filter condensers (see below photo) on the actuator modules that filter eventual interferences coming from the actuator motors.
- **software:** we have modified the starting ramps of the actuator motors. Having a slower start, the possible disturbances may be of lower intensity.



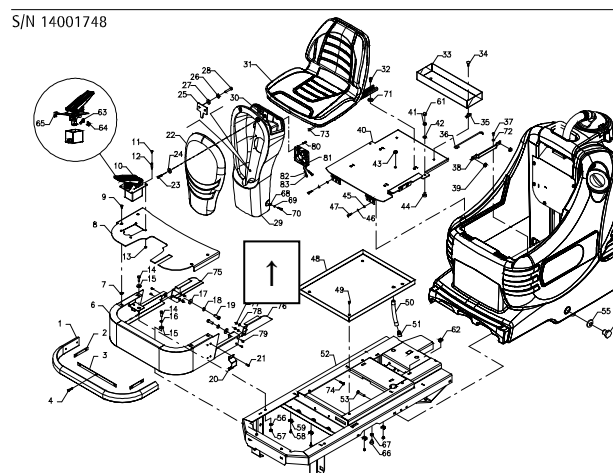
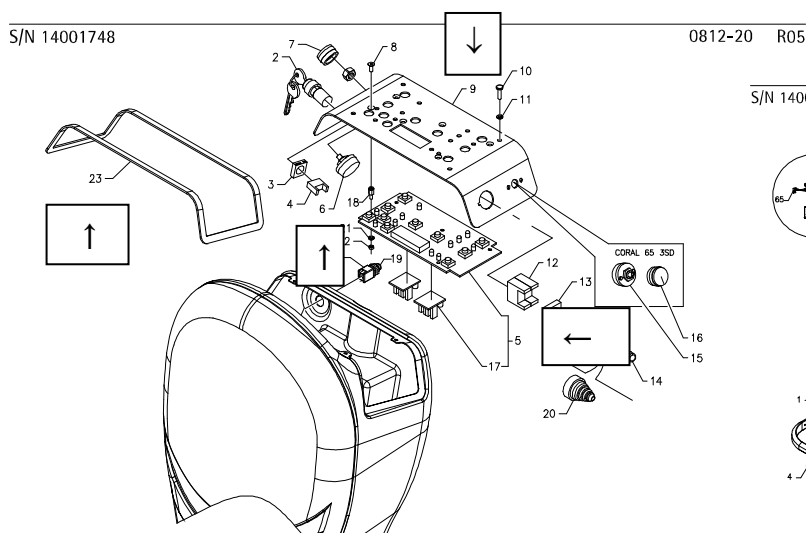
→ Starting from serial number: 14001748 dated 08/05/14 for coral 65 and serial number 14001760 dated 08/05/14 for coral 65II, table 0812-20 R05 and table 0801-10 R06.

The **front covering and the control panel** has been replaced to fit the sealing gasket. The housing of the control panel (pos. 9) has been enlarged to permit the assembly of a **sealing gasket** (pos. 23). This modification requires an intervention on the mould of the front covering 20611010 which cannot be supplied anymore as a spare part for the produced machines. **In case of spare parts requests, it is necessary to supply the new front covering with the new control panel and the gasket, informing us about the colour of the covering.**

The label of the control panel remains unchanged.

→ Starting from serial number: 14003023 dated 29/07/14 – table 0812-20 R05

The shaft of the rotating commutator (pos. 6, cod. 63405002) with carve deformed the knob during the fixing with the result that it inclined itself. To avoid this problem we receive the commutators with the shaft without carve. The part number remains the same and it is interchangeable with the previous one.



Finally, we have added table 0812-40 R00 for the on-board charger assembly.

At your disposal for additional explanations, we remain

with best regards

ADIATEK SRL

Technical dept.

Amore