



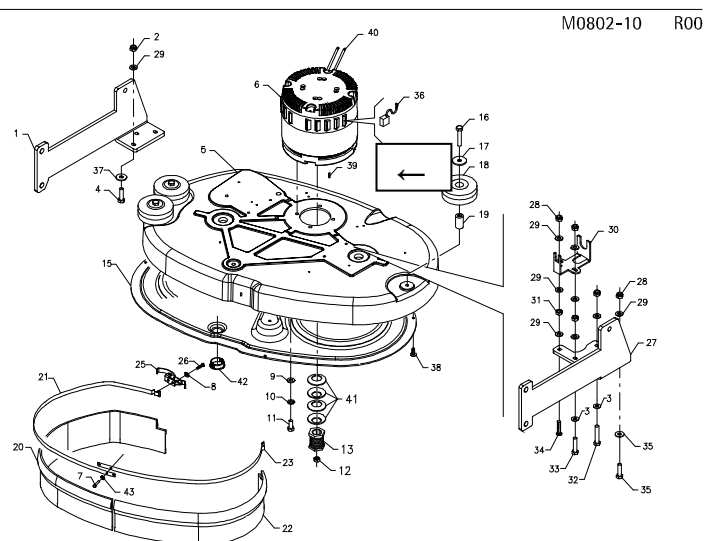
Different technical modifications and updatings on coral 65m



Here below you will find the most important modifications carried out on **coral 65m**. We ask you to carefully read all the information, necessary for your future orders. We add furthermore the updated index with all its revisions, so that you check your files and ask for the missing tables.

→ Starting from serial number: 13003353 dated 08/10/13 – table M0802-10 R00

In order to adjust better the belt position, we have lengthened the motor shaft of 4mm. Furthermore the key has been replaced with a longer one (pos. 39).



ref. table M0803-10 R00, pos. 43

We have corrected the part number of the screw of pos. 43, which at the place of 60110401 is: 60110411. The description remains unchanged.

ref. table M0805-10 R00, pos. 16

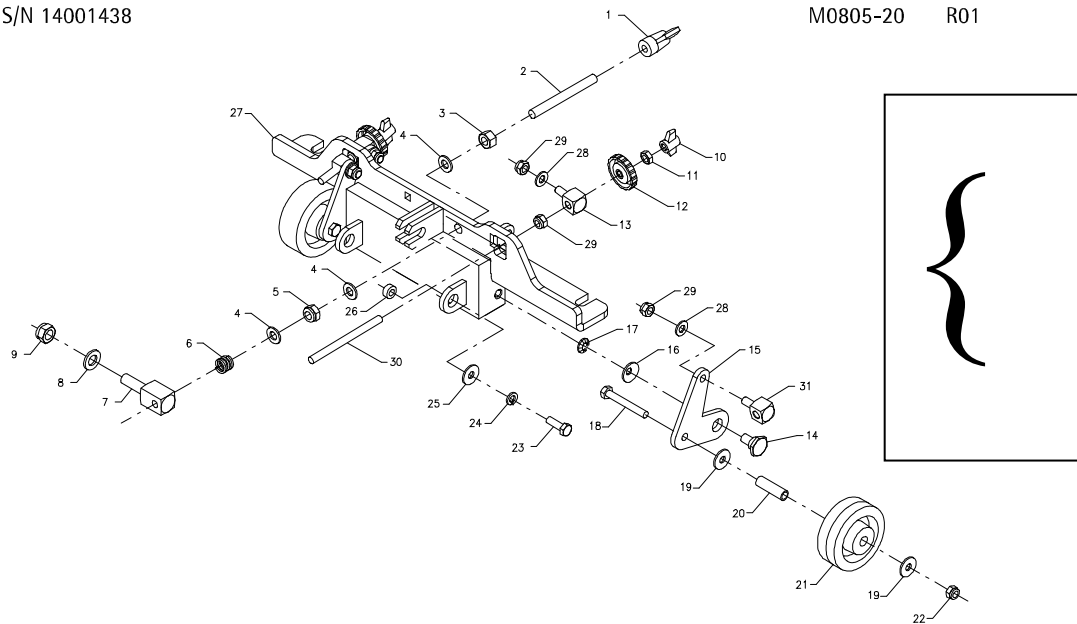
We have corrected the part number of the screw of pos. 16, which at the place of 60110924 is: 60110824. The description remains unchanged.

2

→ Starting from serial number: 14001438 dated 08/04/14 – table M0805-20 R01

The complete squeegee coupling will be replaced with a new one, because the adjustment with this new system is much more solid also in presence of heavy impacts. Consequently the adjustment system has been modified and therefore a new coupling and new wheel supports are needed. The adjustment will not be anymore by simple leaning onto the support but the new system will be equipped with a threaded tie rod and adjuster. The new system may be applied integrally also on already produced machines.

S/N 14001438 M0805-20 R01



Ref. table M0810-10 R00, pos. 27

We have corrected the part number of the clamp of pos. 27, which at the place of 61903006 is: 61930006. The description remains unchanged.

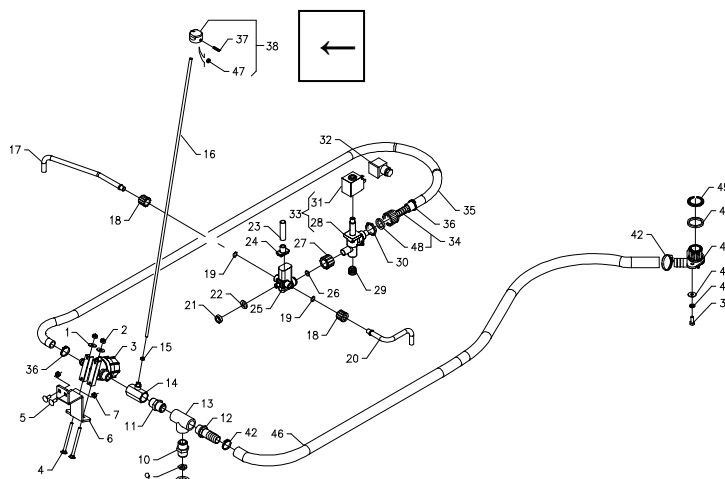
➔ Starting from serial number: 14000479 dated 28/01/14 – table M0810-20 R01

We have replaced the solution valve knob made with a mould designed in PA6 + glass fiber. The new part is interchangeable with the previous one.

S/N 14000479

M0810-20 R01

3



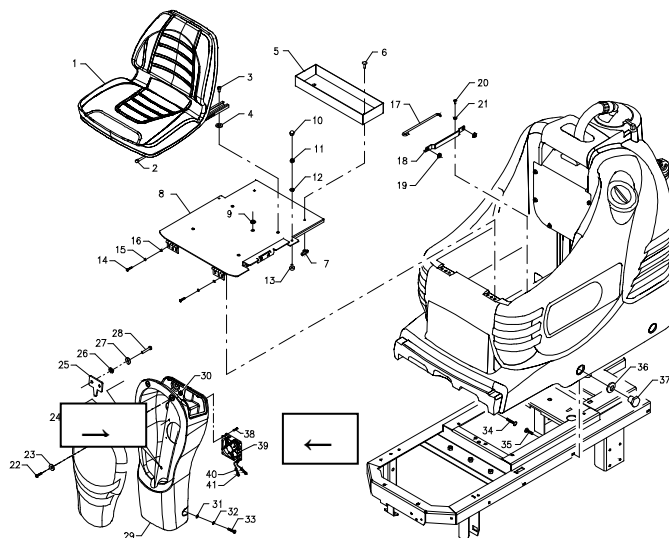
➔ Starting from serial number: 14001706 dated 29/04/14 – table M0811-10 R01 and M0812-10 R00

To improve the performances of the chopper card, we have added a cooling fan. This device requires the realization of ventilation openings on the front column, on the front frame and on the electric panel. The modification can be applied also on already produced machines. The complete assembly of the fan has part number: V0812010

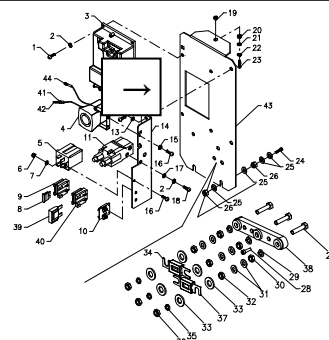
The assembling instructions T081208 are available.

S/N 14001706

M0811-10 R01



M0812-10 R00



→ Starting from serial number: 13003293 dated 02/10/13, table M0812-20 R00, pos. 5
We have replaced the fuse 62801003 of 10A with one of 15A having part number 62801501. This fuse is assembled on the check card of the functions, pos. 5.
We enclose the modified electric diagram, Cre0812-30 R01 (pos. F5).

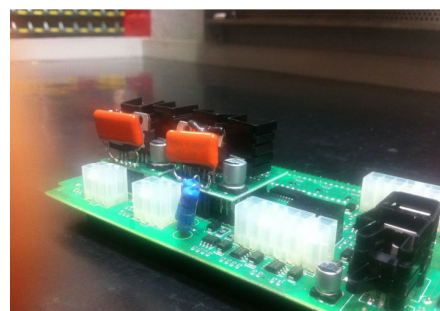
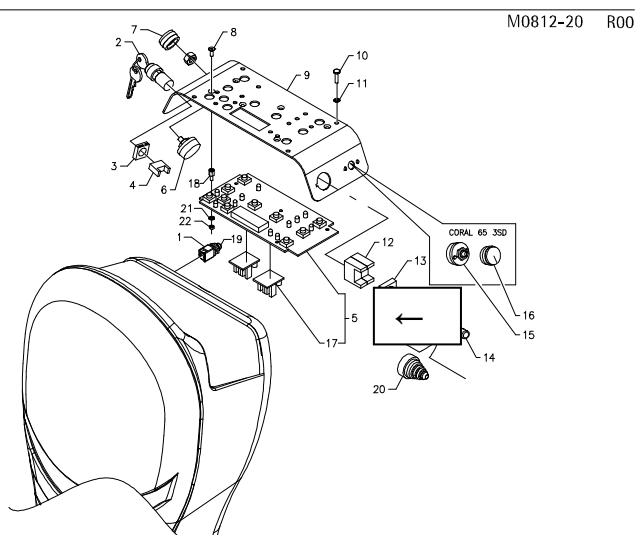
4

→ Starting from serial number: 14001284 dated 19/03/14, pos. 5
We have updated the software of the check card functions to version 5_4 making it safer and more reliable.

All the problems of the check card are given from interferences that the electric layout gives to the microprocessor.

We have intervened both in the hardware and in the software:

- **hardware:** we have added two filter condensers on the actuator modules that filter eventual interferences coming from the actuator motors.
- **software:** we have modified the starting ramps of the actuator motors. Having a slower start, the possible disturbances may be of lower intensity.



→ Starting from serial number:

14001760 dated 08/05/14, table M0811-10 R02 and table M0812-20 R01

The front covering (pos. 29) and the control panel has been replaced to fit the sealing gasket.

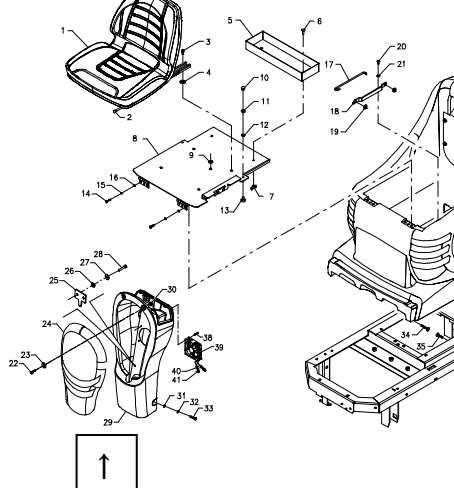
The housing of the control panel (pos. 9) has been enlarged to permit the assembly of a sealing gasket (pos. 23). The modification requires an intervention on the mould of the front covering 20611010 which cannot be supplied anymore as a spare part for the produced machines. **In case of spare parts requests, it is necessary to supply the new front covering with the new control panel and the gasket, informing us about the colour of the covering.** The label of the control panel remains unchanged.

5

→ Starting from serial number: 14003023 dated 29/07/14 – table M0812-20 R01

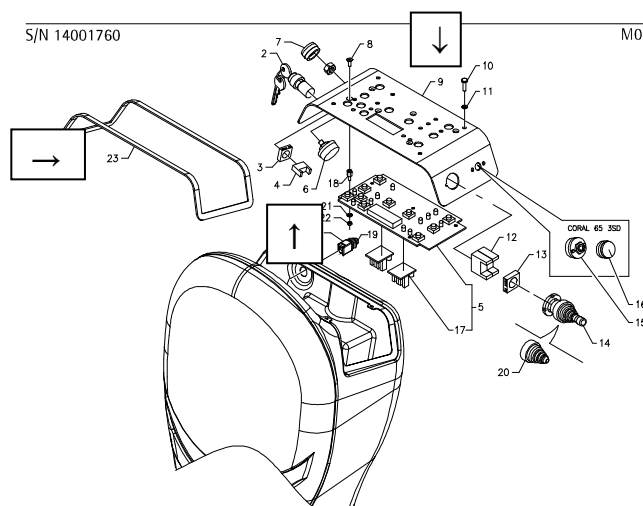
The shaft of the rotating commutator (pos. 6, cod. 63405002) with carve deformed the knob during the fixing with the result that it inclined itself. To avoid this problem we receive the commutators with the shaft without carve. The part number remains the same and it is interchangeable with the previous one.

S/N 14001760



S/N 14001760

M0812-20 R01



At your disposal for additional explanations, we remain

with best regards

ADIATEK SRL

Technical dept.

Amore